



SAFEGUARDS AND SAFEGUARDS INFORMATION SYSTEM (SIS) FOR REDD+ IN INDONESIA

NUR MASRIPATIN

Director of the Centre for Standardization
and Environment - the Ministry of
Forestry/Coordinator of SIS-REDD+
development

OUTLINE

- SAFEGUARDS AND SIS-REDD+
- SIS-REDD+ AND PRISAI
- SESA AND PRISAI
- POTENTIAL ROLE OF SESA IN SIS-REDD+

SAFEGUARDS AND SIS-REDD+ : background



- ❑ Safeguards and SIS-REDD+ are the mandate from Cancun Agreement /COP-16 decision (decision 1/CP.16) :
 - 7 Safeguards (Paragraph 69; Paragraph 2 Annex 1)
 - SIS-REDD+ (Paragraph 71 d)
- ❑ Existing policy and other instruments for sustainable management of forest which relevant to COP-16 safeguards,
- ❑ On going process of REDD+ specific safeguards/standards development (PRISAI, SES etc)

Context

Characteristics

- Transparency,
- Inclusiveness,
- In line with national legislations,
- In accordance with national circumstances.

Existing policy and other instruments relating to COP-16 safeguards

Design

- Simplicity,
- Completeness
- Accessibility
- Accountability

Provision of Information

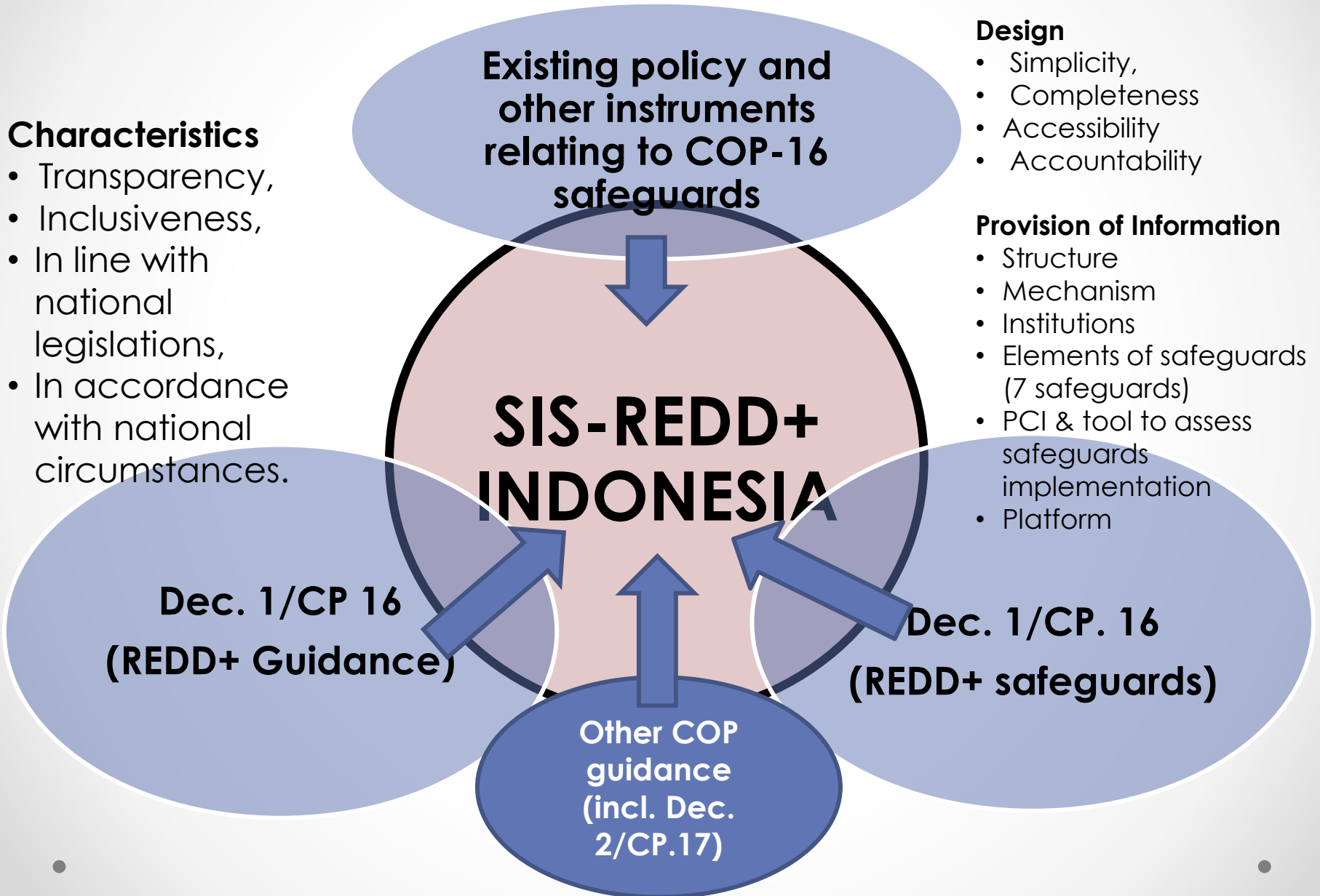
- Structure
- Mechanism
- Institutions
- Elements of safeguards (7 safeguards)
- PCI & tool to assess safeguards implementation
- Platform

**SIS-REDD+
INDONESIA**

Dec. 1/CP 16
(REDD+ Guidance)

Dec. 1/CP. 16
(REDD+ safeguards)

Other COP
guidance
(incl. Dec.
2/CP.17)



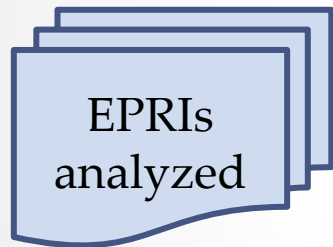
Existing policy and other relevant instruments

1. Environmental Impact Assessment (AMDAL)
2. Strategic Environmental Assessment (KLHS)
3. Sustainable Management of Production Forest (PHPL)
4. SFM Certification (LEI, FSC)
5. System for Verification of Timber Legality (SVLK)
6. High Conservation Value Forest (HCVF)
7. Free Prior Informed Consent (FPIC)
8. Strategic Environmental and Social Safeguards Assessment (SESA)
9. Others (e.g. Rights-based safeguards, Partnership Governance Index, Legislation related to environmental management, biodiversity conservation, etc.)

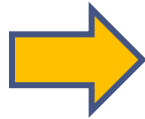
Process

Criteria :

- Relevance
- Limitation in scope
- Effectiveness



7 safeguards



7 Principles, 17
Criteria, 32
Indicators



D & I on
safeguards
implementation



Information
Provision (web-
platform and
other media)

Findings :

- Based on the criteria
- Gaps and actions needed

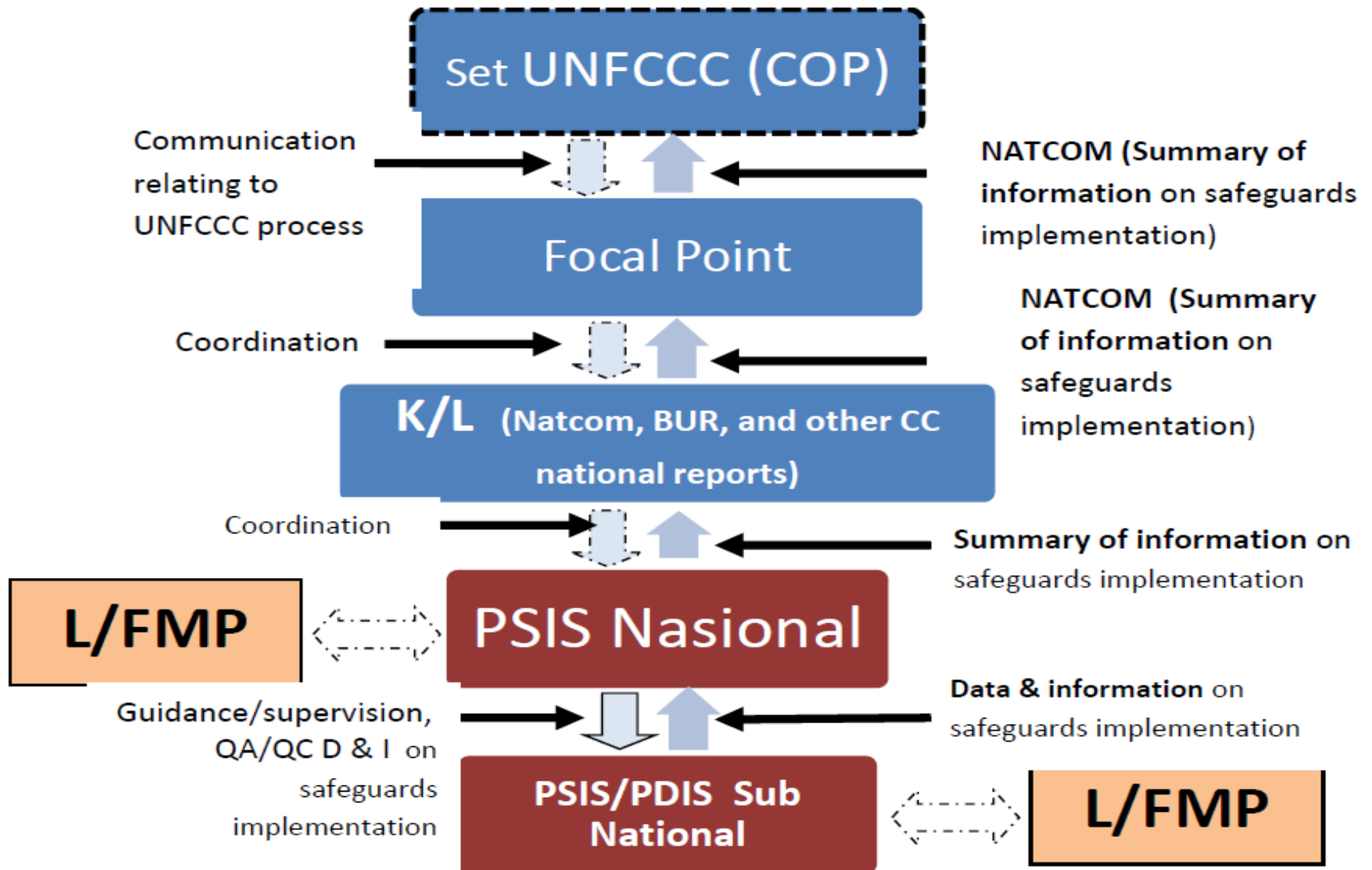


PCI for SIS-REDD+

- Developed for assessing safeguards implementation (how the seven safeguards from COP-16 decision are addressed and respected),
- 7 Principles, 17 Criteria, 32 Indicators :
 - 1 (3C – 4I)
 - 2 (2C - 3I)
 - 3 (4C – 6I)
 - 4 (2C – 6I)
 - 5 (2C – 6I)
 - 6 (2C – 4I)
 - 7 (2C – 3I)
- Available at “www.staneclimate.org”



Structure of SIS-REDD+



SIS-REDD+ AND PRISAI : background and context

- SIS-REDD+ developement was coincide with PRISAI developement (started early 2011),
- Both serve different purposes but have potential to be integrated,
- Discussion for aligning PRISAI and SIS-REDD+ has been started from early stage, however, since both operate at different level and there are a number of existing instruments which need to be considered in SIS-REDD+ developement, both groups agreed to continue discussion for the alignment of PRISAI and SIS-REDD+ while allowing parallel process in their developement.



PRISAI: a safeguard protocol at project level



PRISAI, the **Principles, Criteria, and Indicators for REDD+ Safeguards in Indonesia**, has been developed through a bottom-up manner with involvement of key stakeholders at the national and provincial levels. The provincial process will provide a provincial context to the process.

Currently developing operational guidelines for PRISAI are being developed and being tested on the ground (at existing project sites),

A process to align PRISAI with the process to develop a UNFCCC-related **Safeguard Information System (SIS)** has been started from early stage,

The Safeguard Information System reflects the current system of safeguards and safeguard instruments in Indonesia **which are relevant to the 7 COP-16 safeguards**, applied at a policy, regional and project level.

SESA AND THE PRISAI

- ❑ **SESA** is supporting the ongoing consultation process of PRISAI, support the elaboration of operational guidelines for PRISAI.
- ❑ SESA process is led by **National Forest Council (DKN)** – an independent body with institutionalized representation from different stakeholder groups.

POTENTIAL ROLE OF SESA IN SIS-REDD+

- ❑ SIS-REDD+ development was started far before the start of FCPF(with SESA) activities,
- ❑ In 2013 SIS-REDD+ development will continue with the following activities :
 - Testing PCI in SIS-REDD+ to assess how the 7 safeguards of COP-16 decision are addressed and respected in REDD+ activities in Indonesia,
 - Develop web-based SIS-REDD+ at the national level and two/three provinces (linked to national level) as the models,
 - Continue discussion on aligning PRISAI-SIS REDD+.
- ❑ SESA process (led by DKN) is still in the early stage, however, there is ongoing discussion on how to make the best use of SESA process in REDD+ readiness activities in Indonesia, including its potential role relating to SIS-REDD+ development.



THANKYOU



passion & integrity

nurmasripatin@ymail.com; nurmasripatin@gmail.com